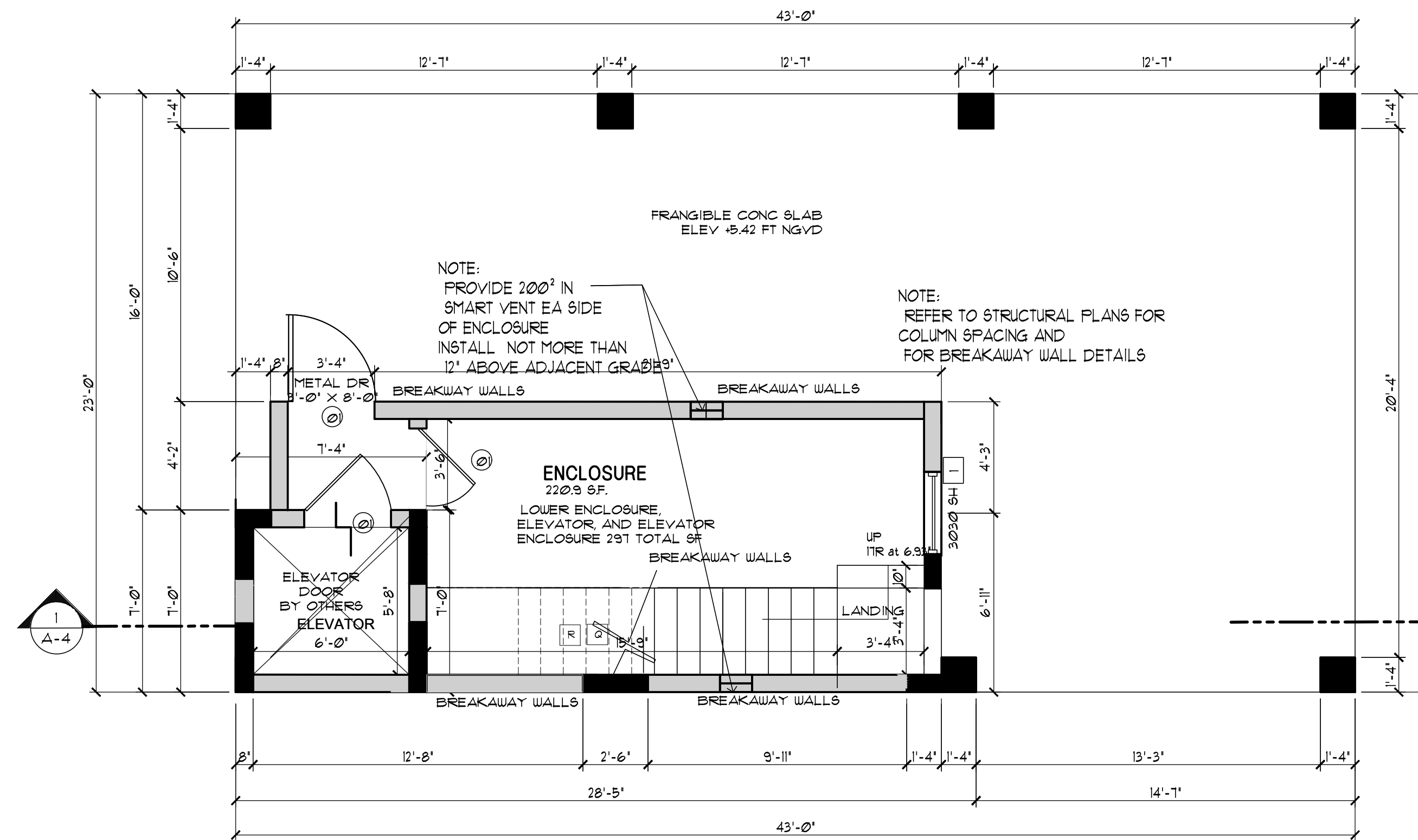


DOOR SCHEDULE:

No.	W	H	T	MAT.	TYPE	GLASS	MAT. DET.	REMARKS
01	3'-0"	8'-0"	1 3/4"	MTL	AL/MTL DR	-	UD	MTL THRESHOLD WEATHER STRIP (IMPACT-RESISTANT)
02	6'-0"	1'-0"	1 3/4"	AL	ALICAT II GL SLIDING	IMPACT	AL	DESIGNATED EMERGENCY MEANS OF ESCAPE AS PER FBC 2011 SECTION R301.4.1 R301.4.2 WEATHER STRIP/THRESHOLD MAX 1/2" STEP GLAZ 1/4" LDB, SHGC: 0.50
03	3'-0"	6'-8"	3/8"	UD	RAISED PANEL SWING		UD	
04	2'-8"	6'-8"	3/8"	UD	RAISED PANEL SWING		UD	MARBLE SADDLE AT BATHROOMS ONLY
05	2'-6"	6'-8"	3/8"	UD	RAISED PANEL SWING		UD	MARBLE SADDLE AT BATHROOMS ONLY
06	4'-0"	6'-8"		UD	SLIDING CLOSET		UD	CLOSETS
07	2'-6"	6'-8"		UD	COLONIAL BI-FOLD		ALUM	A/C METAL DOOR: FULL LOUVERED
08	2'-0"	6'-8"		UD	POCKET DOOR		UD	
09	3'-0"	6'-8"		UD	SLIDING CLOSET		UD	CLOSETS
10	2'-6"	6'-8"	3/8"	UD	BI-FOLD COLONIAL		UD	
11	2'-6"	6'-8"		UD	POCKET DOOR		UD	
12	1'-0"	1'-0"	1 3/4"	AL	ALICAT II GL SLIDING	IMPACT	AL	DESIGNATED EMERGENCY MEANS OF ESCAPE AS PER FBC 2011 SECTION R301.4.1 R301.4.2 WEATHER STRIP/THRESHOLD MAX 1/2" STEP GLAZ 1/4" LDB, SHGC: 0.50

GENERAL NOTES:

- BATHROOM FLOORS AND BASE TO BE OF IMPERVIOUS MATERIAL AS PER F.B.C. 2020
 SHOWER COMPARTMENTS SHALL HAVE FLOORS AND WALLS CONSTRUCTED OF SMOOTH, CORROSION RESISTANT AND NONABSORBENT WATER-RESISTANT MATERIALS TO A HEIGHT OF NOT LESS THAN 72 INCHES ABOVE THE COMPARTMENT FLOOR AT THE DRAIN AS PER SECTION R 307.2 F.B.C. 2020
- FLORIDA BUILDING CODE R 310
 AN OUTSIDE WINDOW OR DOOR OPERABLE FROM THE INSIDE WITHOUT THE USE OF TOOLS, KEYS, OR SPECIAL EFFORT AND PROVIDING A CLEAR OPENING OF NOT LESS THAN 20 INCHES IN WIDTH, 24 INCHES IN HEIGHT, AND 5.7 SQ. FT. IN AREA. THE BOTTOM OF THE OPENING SHALL NOT BE MORE THAN 44" ABOVE THE FLOOR.
- NUMBERS OF ADDRESSES SHALL BE PLACED VISIBLE AND LEGIBLE FROM THE STREET FRONTING THE PROPERTY AND SHALL BE 3 INCHES MIN. IN HEIGHT.
- TOILET ROOMS SHALL COMPLY WITH SECT. R307.1 F.B.C. 2020
- FOR COLUMN AND CONCRETE FILLED BLOCK CELL LOCATION, SIZE & REINFORCING REFER TO FOUNDATION PLAN SHEET S-1
- ALL FIXED GLASS PANELS SHALL BE 3/16" SAFETY GLASS.
- CLOSET AND BATHROOM DOORS
 EVERY CLOSET DOOR LATCH SHALL BE SUCH THAT CHILDREN CAN OPEN THE DOOR FROM INSIDE THE CLOSET.
 EVERY BATHROOM DOOR SHALL BE DESIGN TO ALLOW OPENING FROM THE OUTSIDE DURING AN EMERGENCY WHEN LOCKED.
 DOORS MAY BE SWINGING OR SLIDING.
- NO DOOR IN ANY MEANS OF ESCAPE SHALL BE LOCKED AGAINST EGRESS WHEN THE BUILDING IS OCCUPIED. ALL DEVICES THAT IMPEDE OR PROHIBIT EGRESS OR THAT CANNOT BE EASILY DISENGAGED SHALL BE PROHIBITED.
- ALL WINDOWS, DOORS, GLASS AND GLAZING ARE TO COMPLY WITH HIGH VELOCITY HURRICANE ZONES R4410.2 FBC 2020
- CAT. II SAFETY GLASS SHALL BE USED AT ALL SHOWER/TUB ENCLOSURES INCLUDING ANY GLAZING WITHIN 60" OF THE FINISH FLOOR SURFACE IN WALLS SURROUNDING ANY TUB OR SHOWER ENCLOSURE AS PER R4410.2.6.2 FBC 2020
- ATTIC ACCESS SHALL COMPLY WITH R807.1 FBC 2020 AS SET FORTH BELOW:
 ATTIC ACCESS IN COMBUSTIBLE CEILING OR ROOF CONSTRUCTION, AND ATTIC ACCESS OPENING SHALL BE PROVIDED TO ATTIC AREAS THAT EXCEED 30 SF. AND HAVE A VERTICAL HEIGHT OF 30 INCHES OR GREATER THE ROUGH-FRAMED OPENING SHALL NOT BE LESS THAN 22 INCHES BY 30 INCHES AND SHALL BE LOCATED IN HALLWAY OR OTHER ACCESSIBLE LOCATION. A 30" MINIMUM UNOBSTRUCTED HEADROOM IN THE ATTIC SPACE SHALL BE PROVIDED AT SOME POINT
- WALL AND CEILING FINISHES SHALL HAVE A FLAME SPREAD CLASSIFICATION OF NOT GREATER THAN 200 TESTED IN ACCORDANCE WITH ASTM E 84 PER FBC 2011 R 302.9.1 AND A SMOKE DEVELOPED INDEX OF NOT GREATER THAN 450 TESTED IN ACCORDANCE WITH ASTM E 84 PER FBC 2020 R 302.9.2
- ALL INSULATION MATERIALS SHALL HAVE A FLAME-SPREAD INDEX OF NOT MORE THAN 25 AND A SMOKE-DEVELOPED INDEX OF NOT MORE THAN 450



FLOOR PLAN LEGEND:

- A REFRIGERATOR SPACE
- B DOUBLE SINK WITH DISPOSAL
- C DISHWASHER
- D SLIDE-IN RANGE AND OVEN
- E LINE OF CABINETS ABOVE
- F 36" HIGH KITCHEN COUNTER
- G WASHER AND DRYER SPACE
- H ELECTRIC WATER HEATER
- I AIR HANDLER UNIT
- J A/C CONDENSING UNIT (SLAB 3'-0" X 1'-6") ELEV. +6.50' NGVD
- K CLOSET W/ SHELVES
- L 22" X 36" ATTIC ACCESS PANEL
- M 42" HIGH COUNTER TOP
- N CAT II SHOWER DOOR
- O ELECT. PANEL, SURFACE MOUNTED
- P GALV STEEL COL SEE STRUCT
- Q 42" HGT. GUARD RAIL MEASURED FROM BOTTOM OF TREAD TO REJECT 4" DIA OBJECT
- R 42" HT GUARDRAIL (36" HANDRAIL)
- S ALUM SPIRAL STAIR PROVIDE SHOP DRAWINGS
- T 42" ALUMINUM RAILING ON CONC CURB

AREA TABULATIONS

GROUND FLOOR STORAGE	220.9 SQ. FT.
ELEVATOR AND LOBBY	76.1 SQ. FT.
TOTAL ENCLOSED GROUND FLOOR	297.0 SQ. FT.

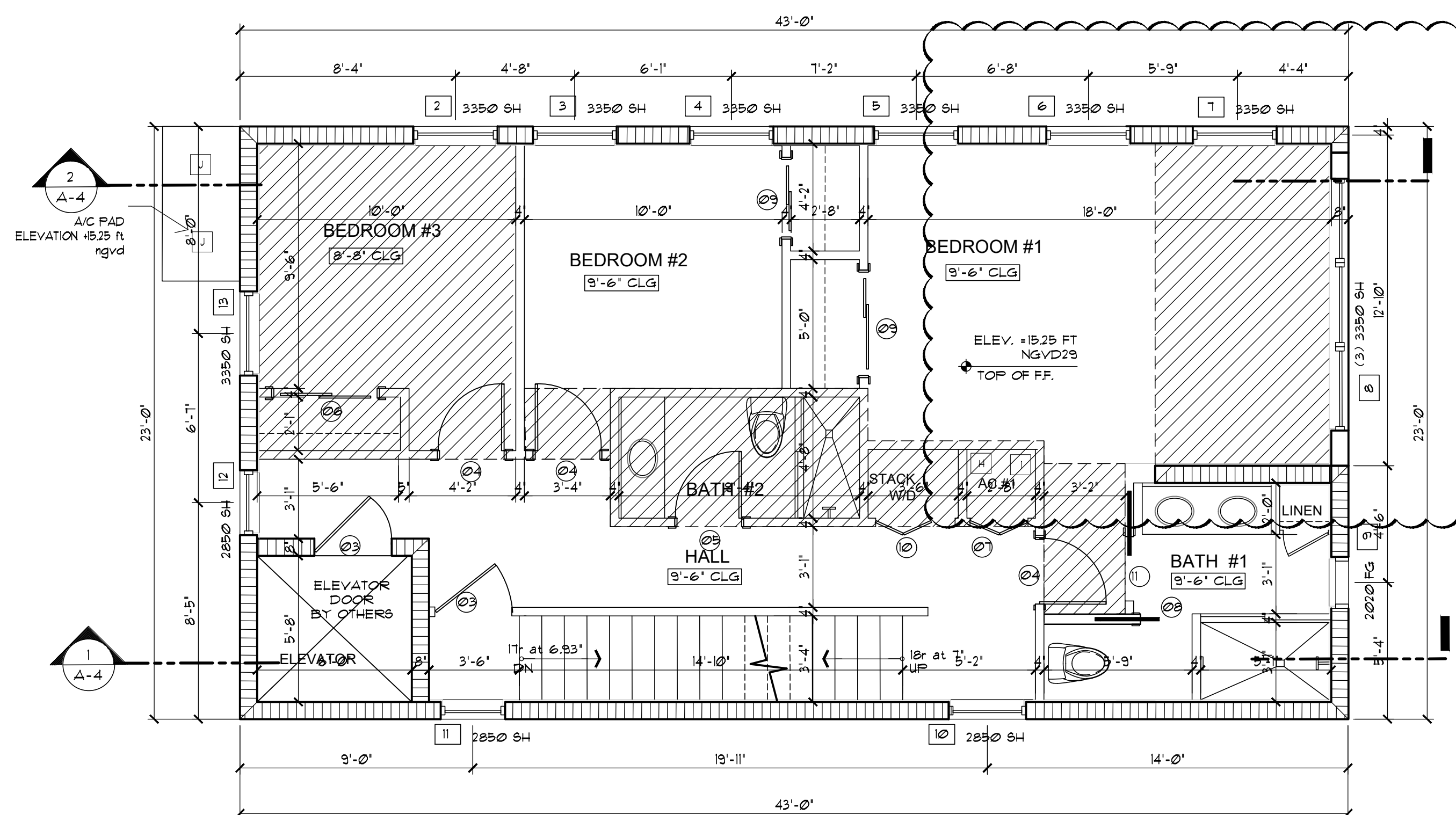
COVERED PARKING:	625.00 SQ. FT.
SECOND FLOOR A/C SPACE:	899.00 SQ. FT.
BALCONY:	150.00 SQ. FT.
THIRD FLOOR A/C SPACE:	832.00 SQ. FT.
BALCONY	83.00 SQ. FT.

WALL LEGEND

- INDICATES 8"x8"x16" MASONRY UNITS (SEE SHEET C-1 FOR FILLED CELL LOCATIONS)
- INDICATES 3-5/8" METAL STUDS PARTITION 24" O.C. WITH 1/2" DRYWALL FINISH EACH SIDE.

**FBC 2020 RESIDENTIAL CODE
 NEC 2017**

TYPE OF CONSTRUCTION: VB
 OCCUPANCY: R-3



SECOND FLOOR PLAN

SCALE: 1/4" = 1'-0"